

A TOPIARY

Illustrations



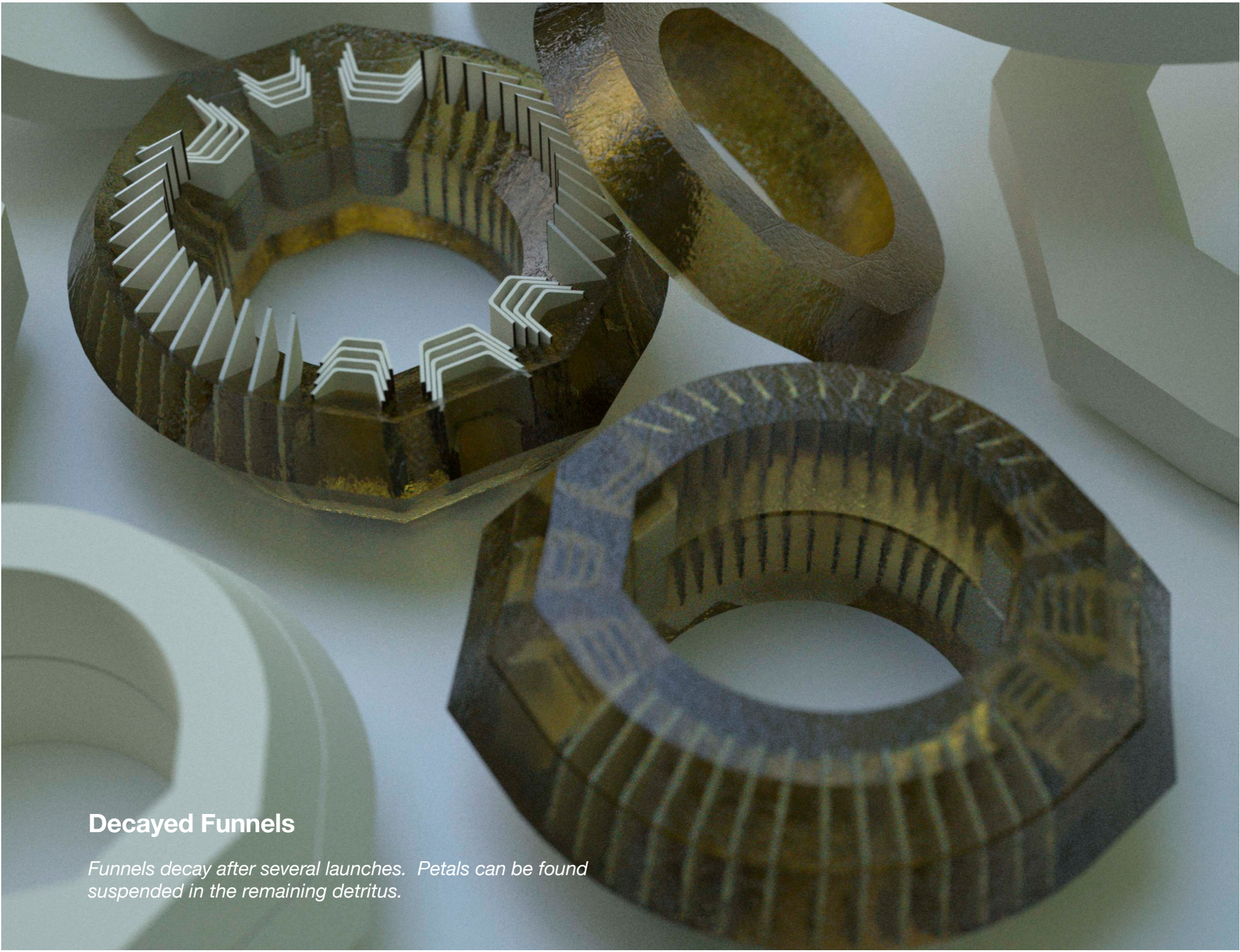
Disc and Funnel

A Disc ejects from the Maker and after a few hours grows into a Funnel.



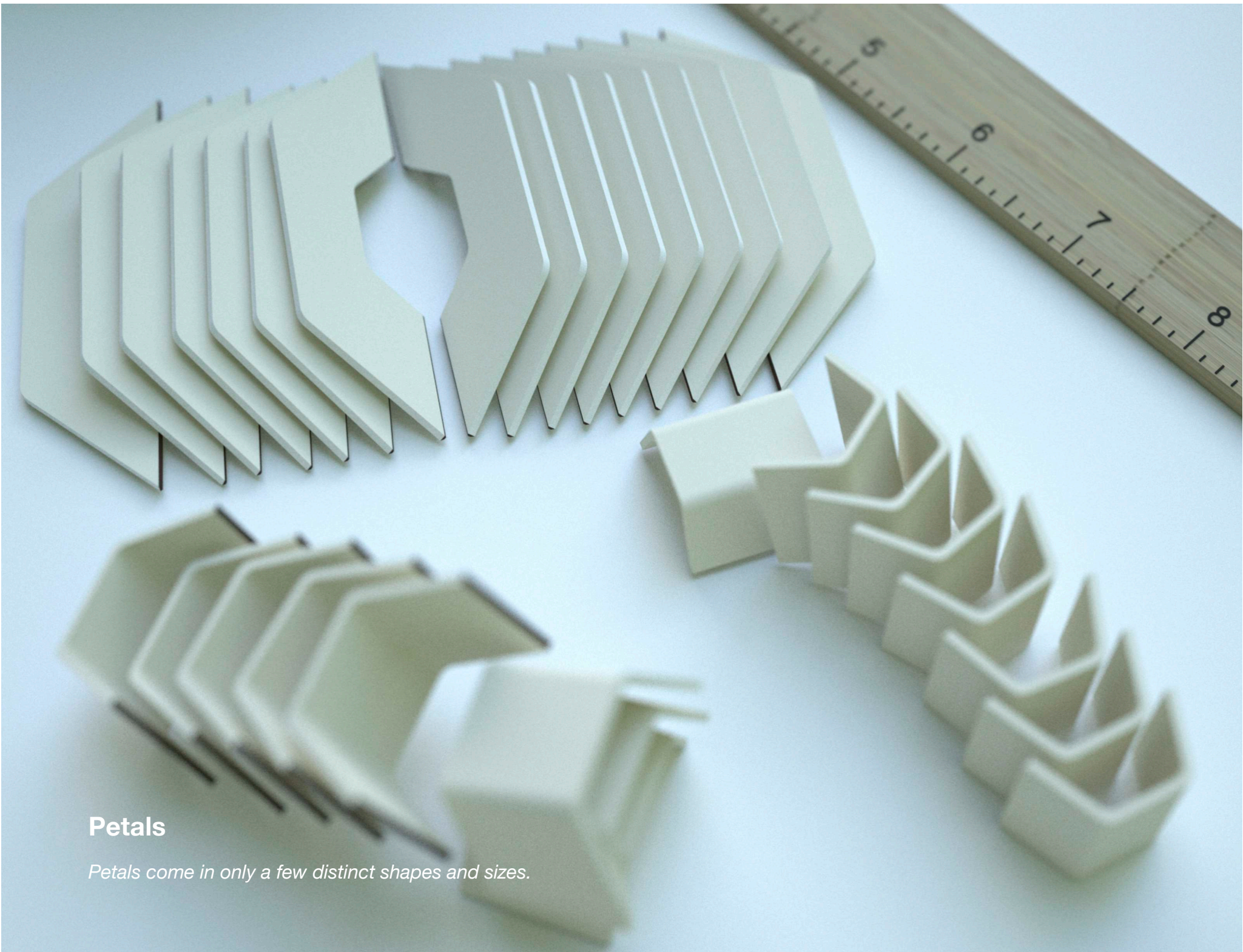
Funnel Stack

Funnels can be fit together to form a tower. This launches into the air when its Controller Disc is brought near.



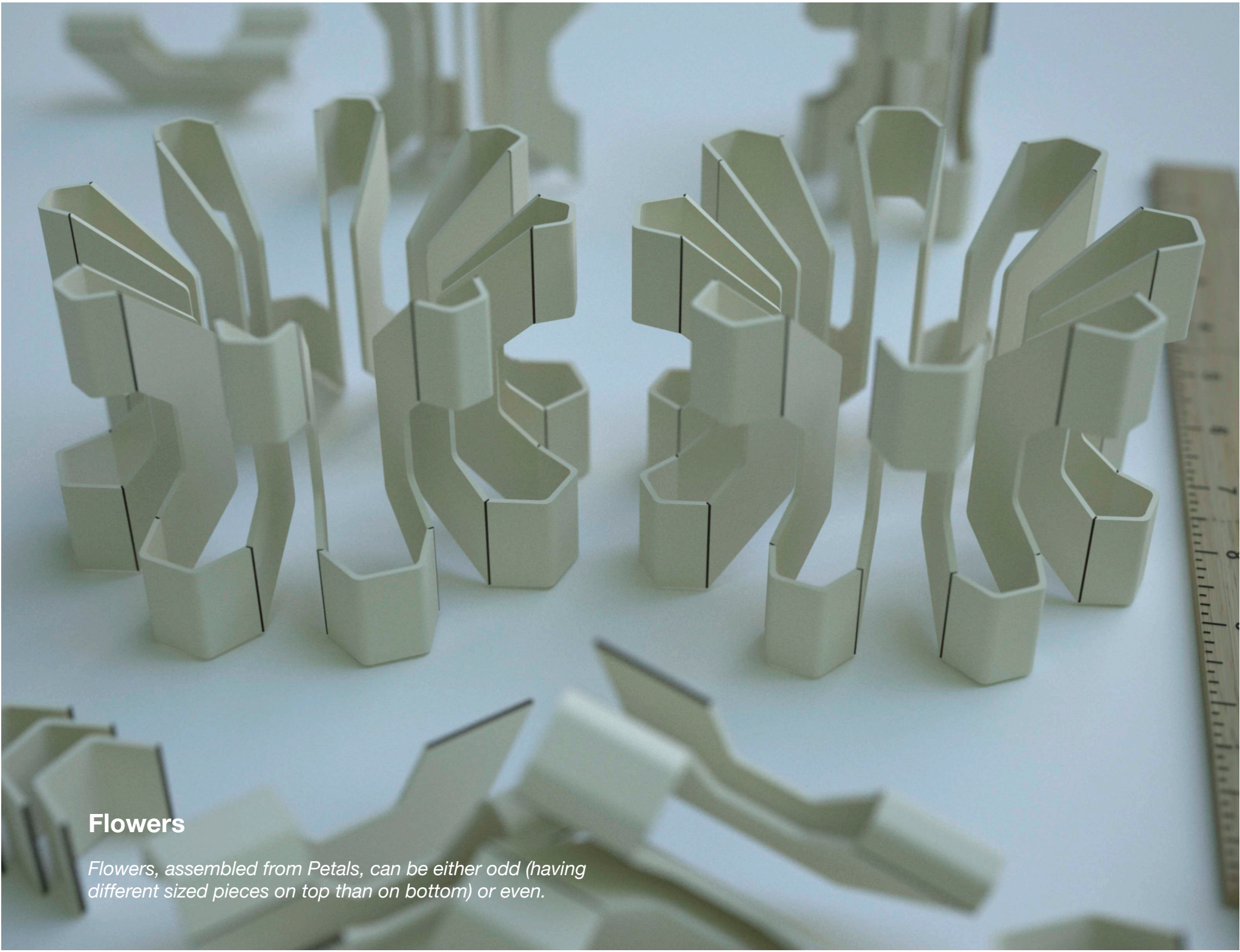
Decayed Funnels

Funnels decay after several launches. Petals can be found suspended in the remaining detritus.



Petals

Petals come in only a few distinct shapes and sizes.

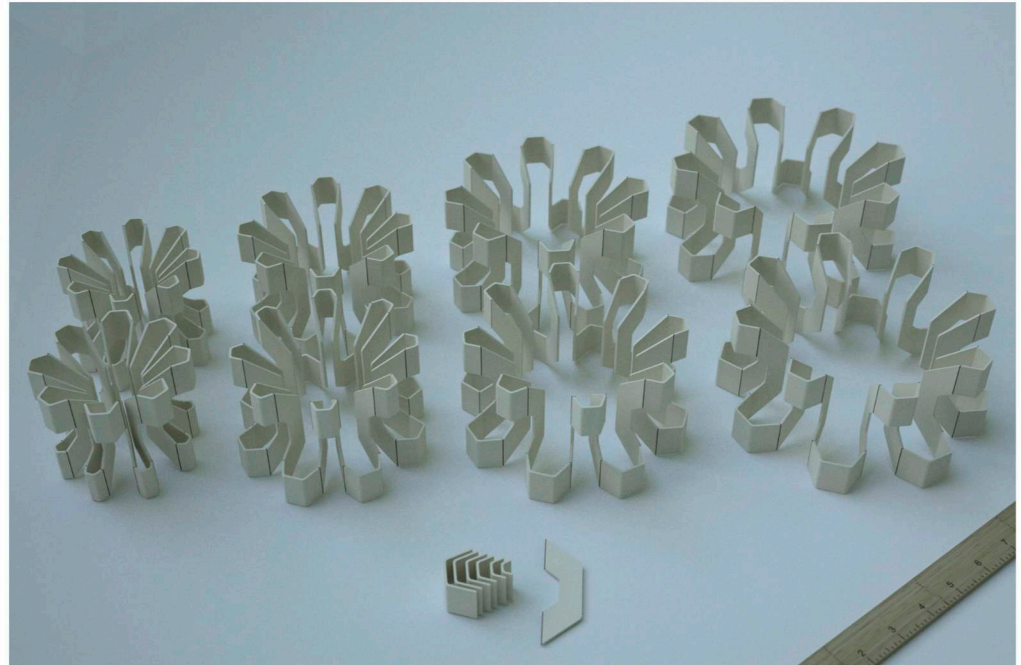


Flowers

Flowers, assembled from Petals, can be either odd (having different sized pieces on top than on bottom) or even.

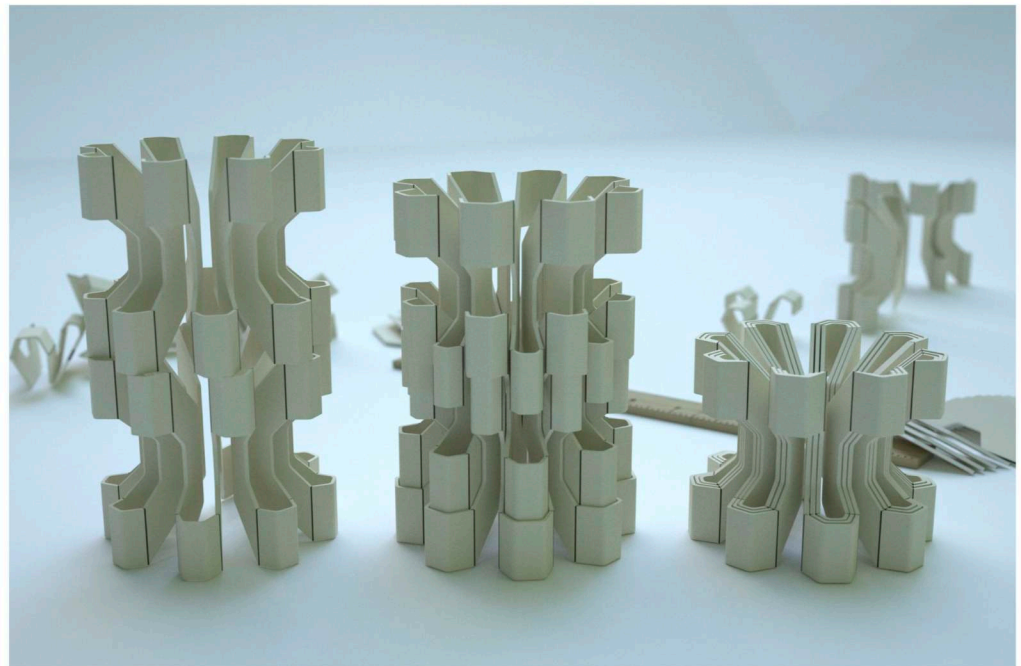
Flower Size

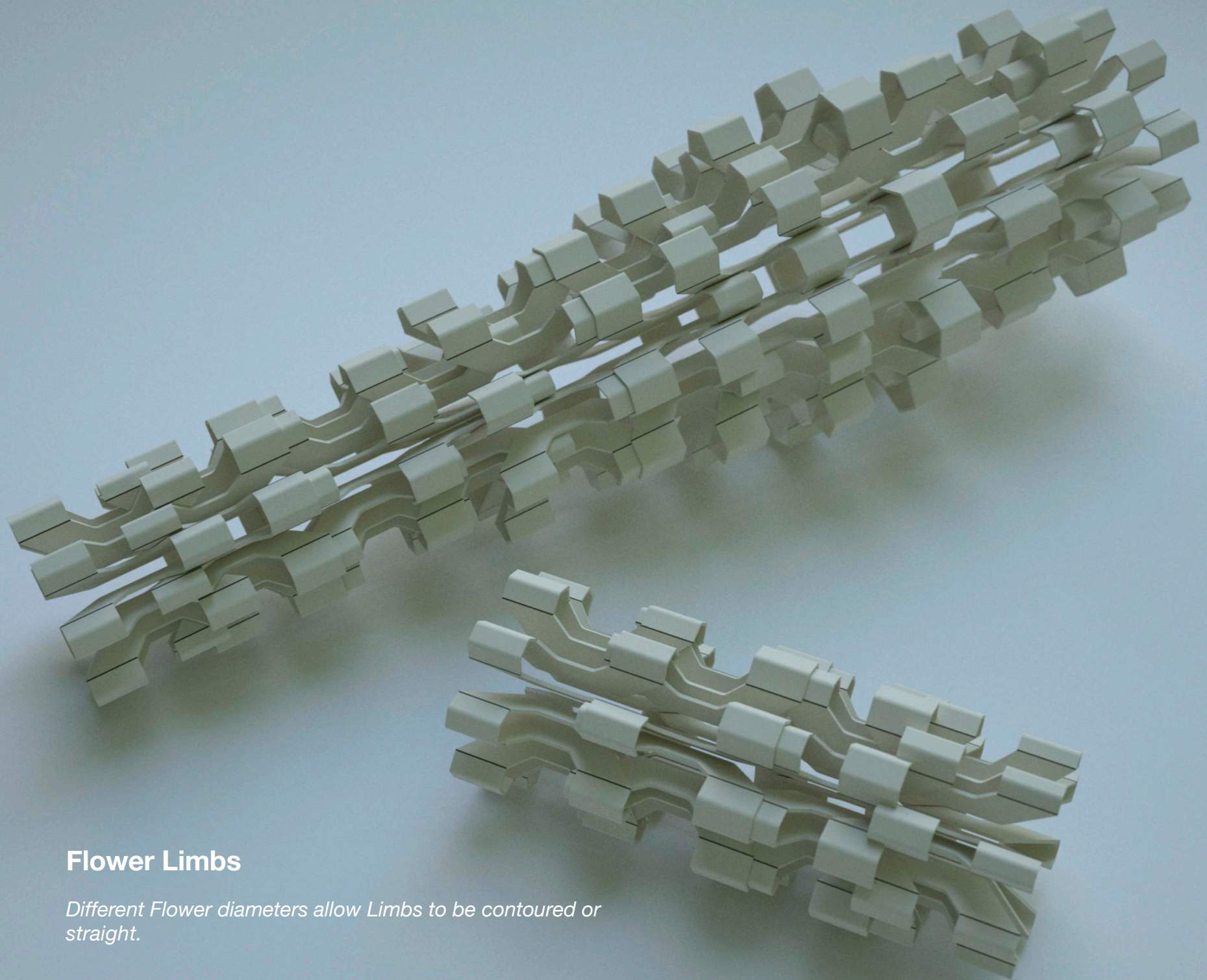
The size of the Petal dictates the diameter of the resulting Flower.



Flower Movement

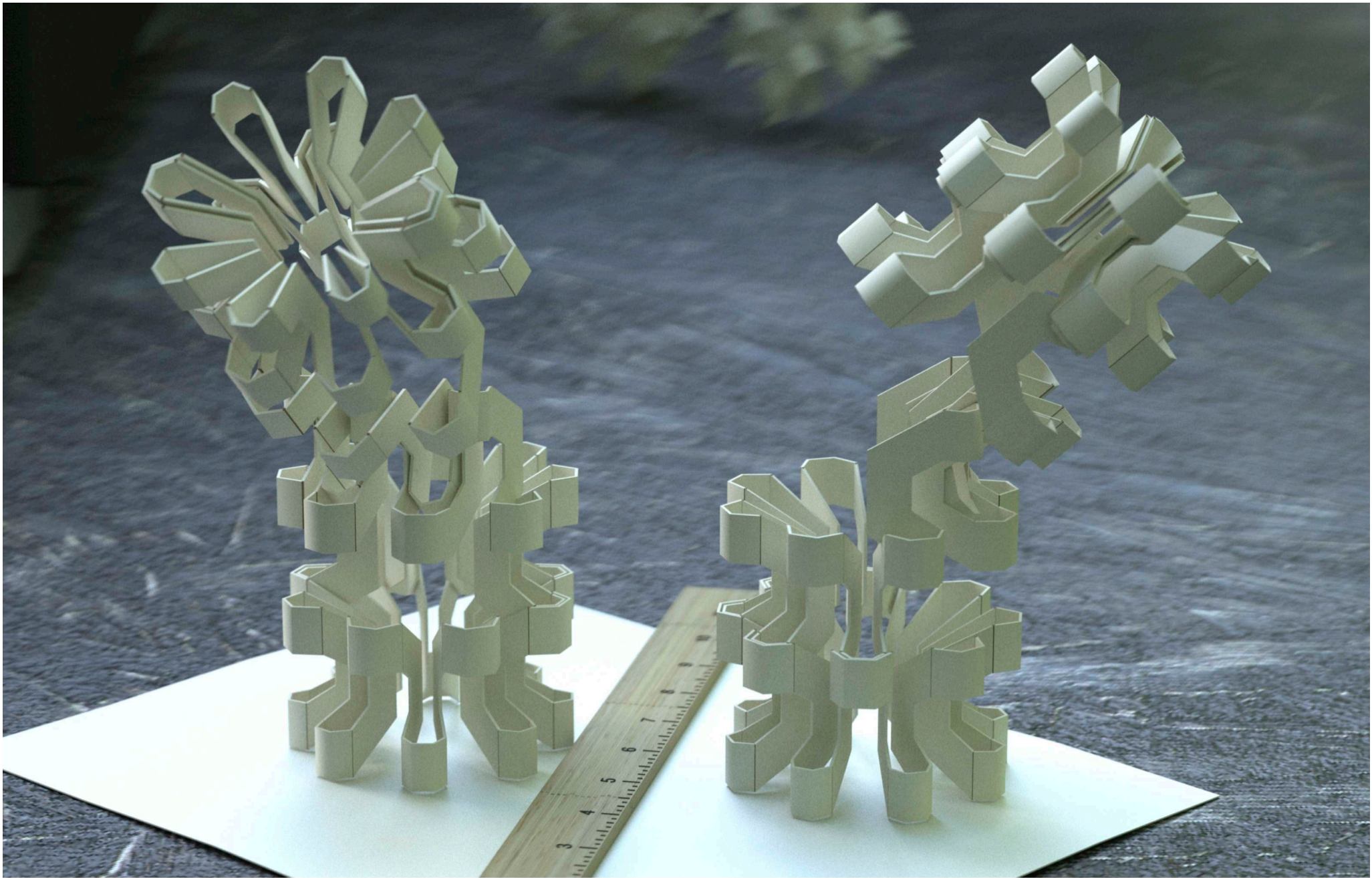
Flowers can spin in relation to each other, slide up and down like pistons, or collapse entirely.





Flower Limbs

Different Flower diameters allow Limbs to be contoured or straight.

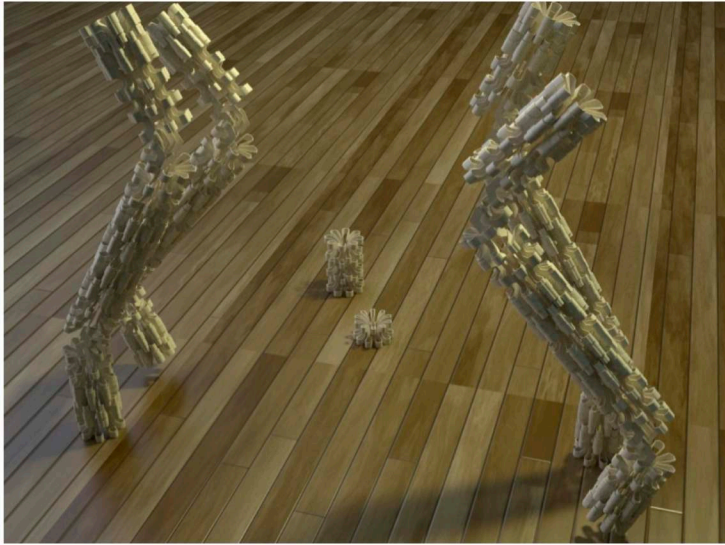


Knee Assemblies

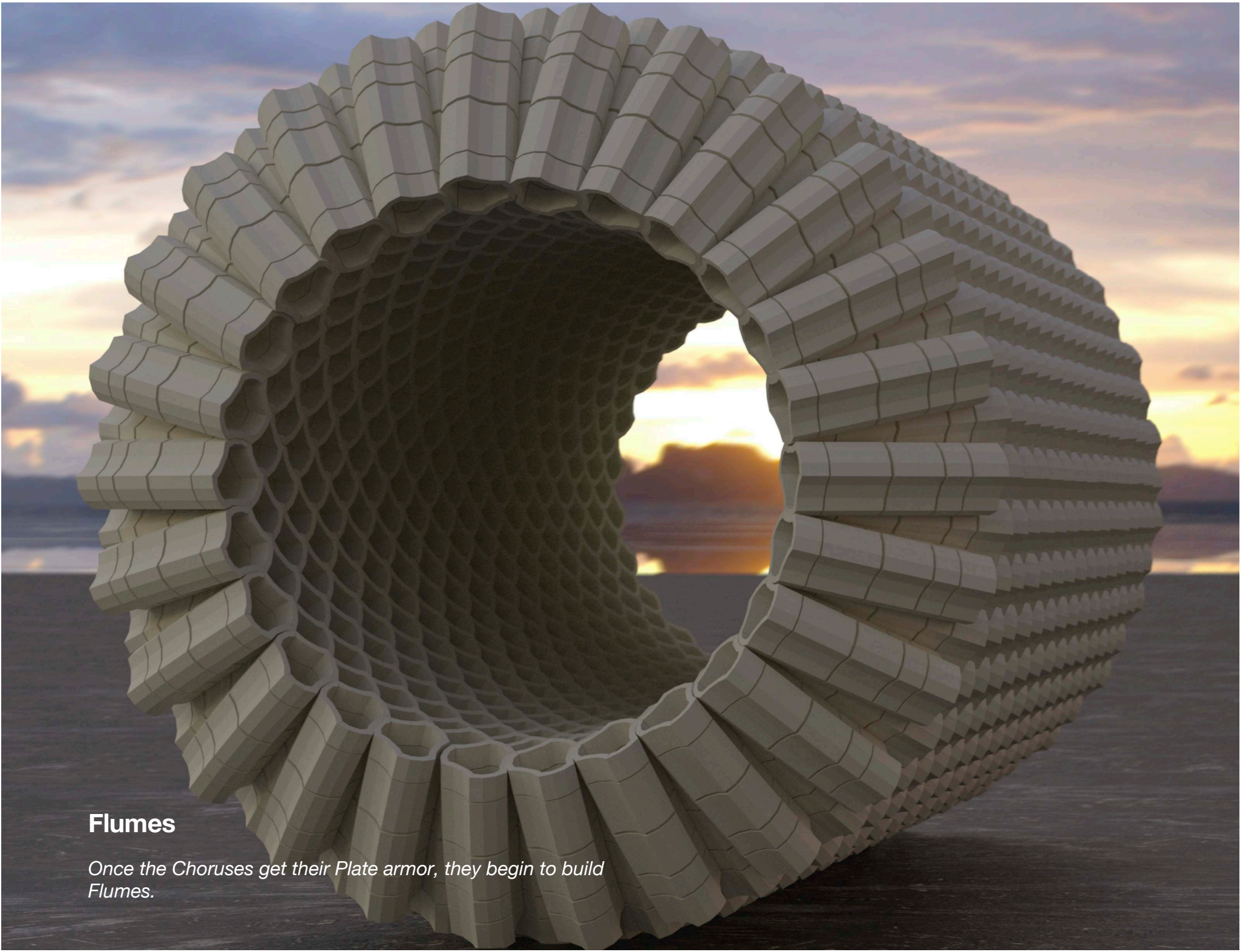
Reconfiguring the Petals into joints enables the Limbs to bend.

Choruses

The first Choruses are simply Limbs, trained to move like dog legs, attached to wooden boxes.

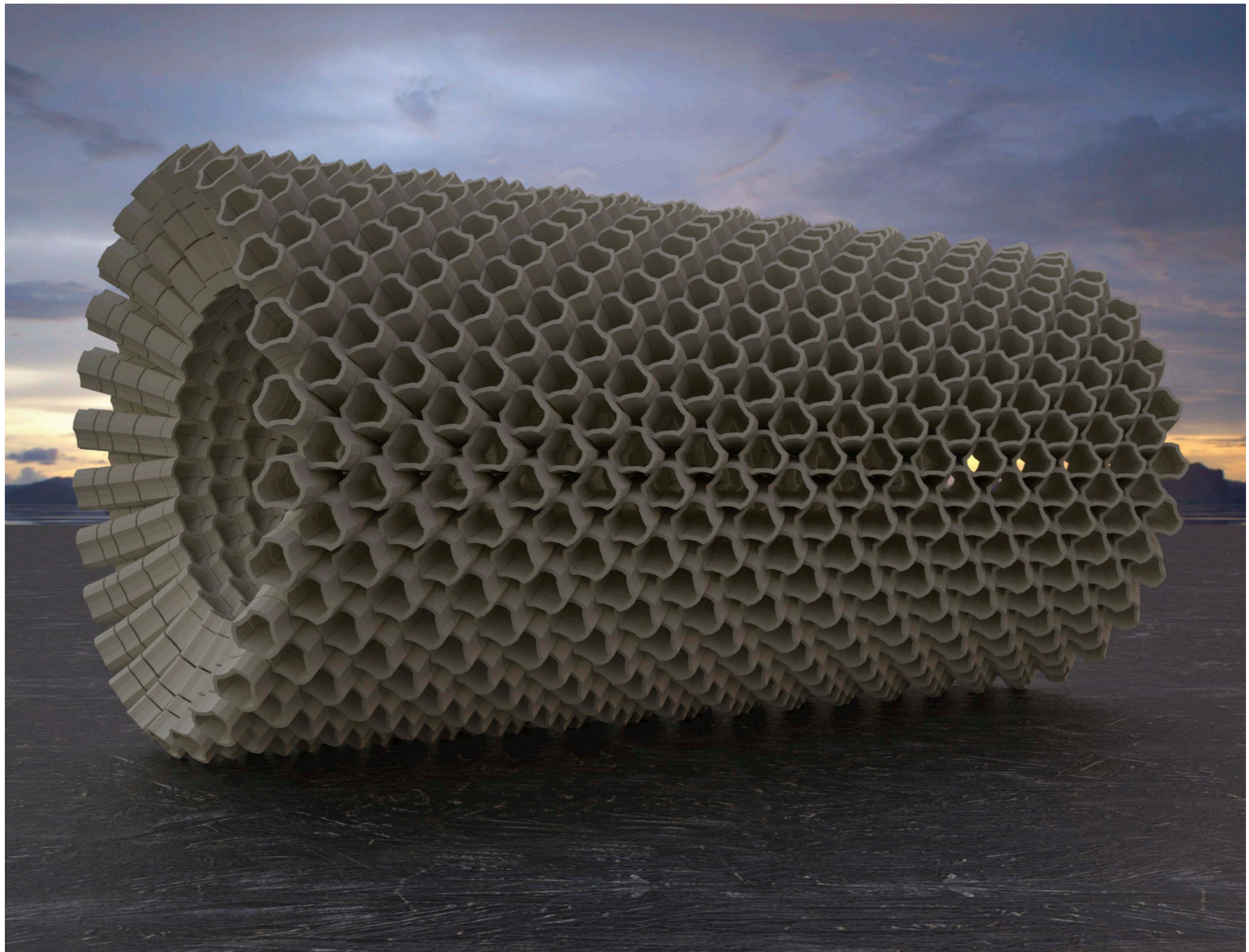


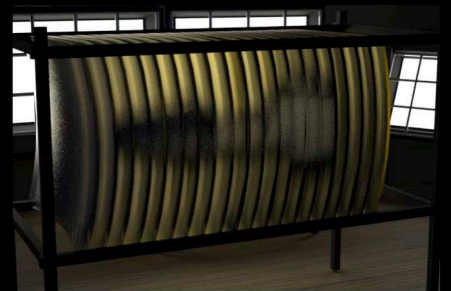
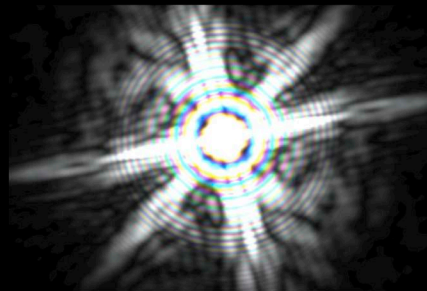
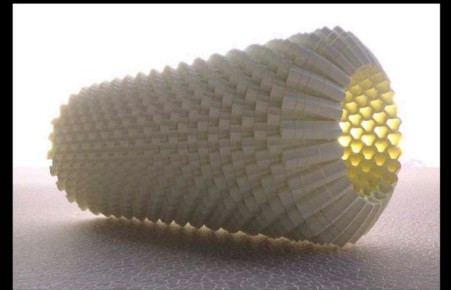
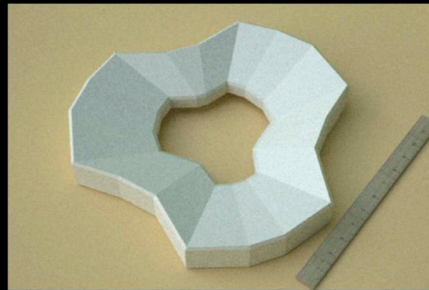
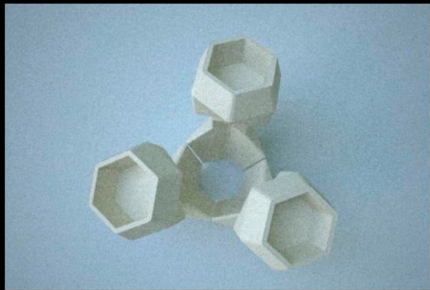
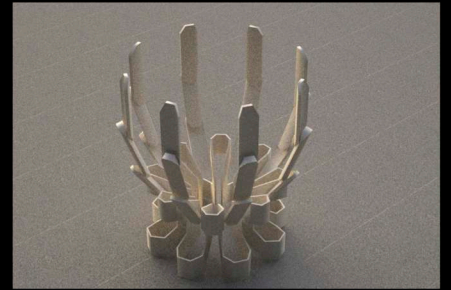
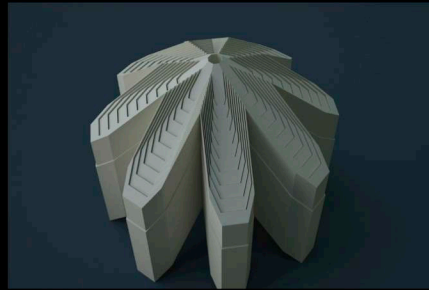
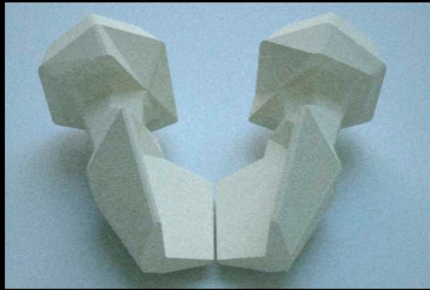
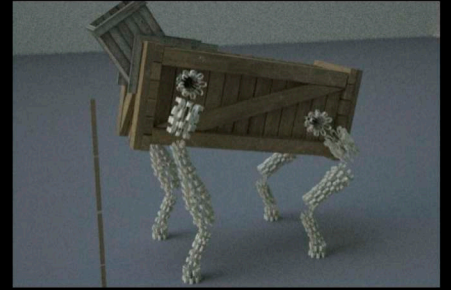
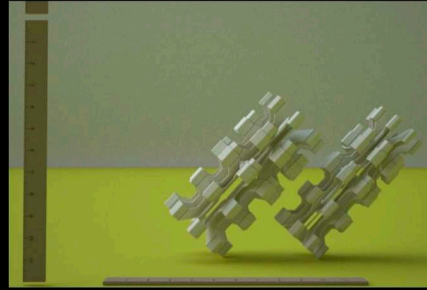
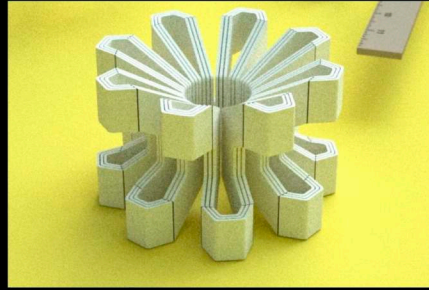
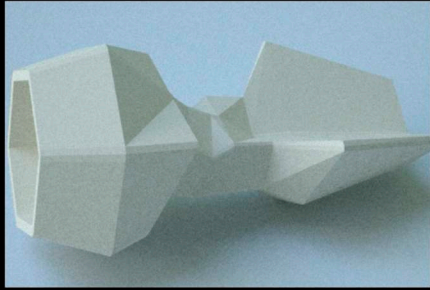


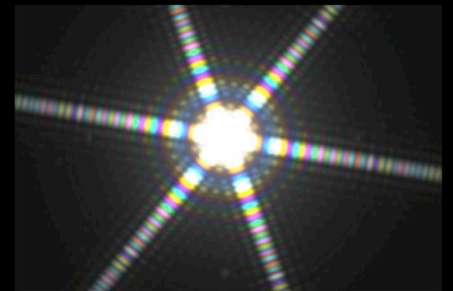
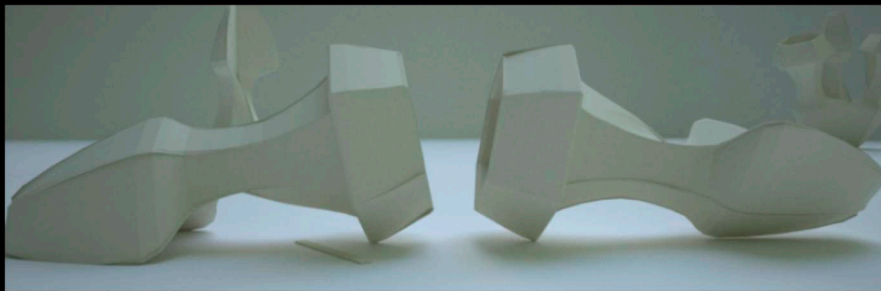
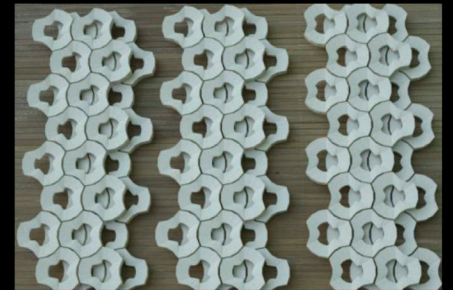
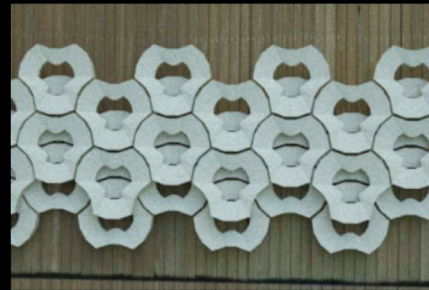
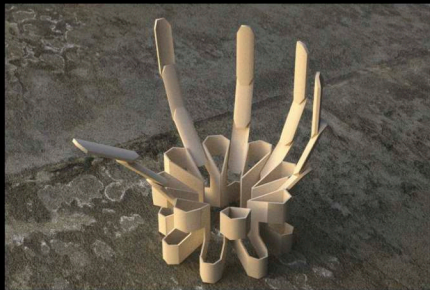
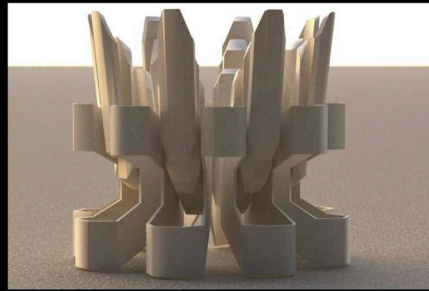
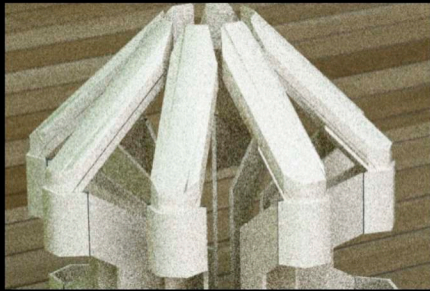
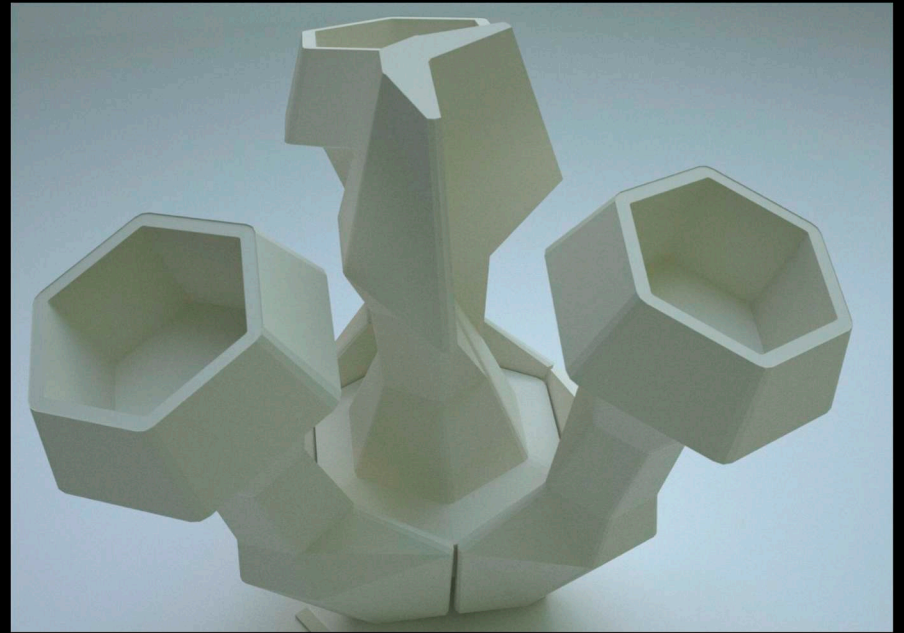
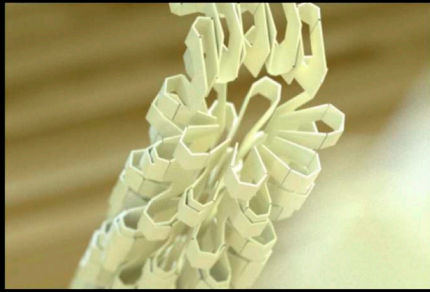


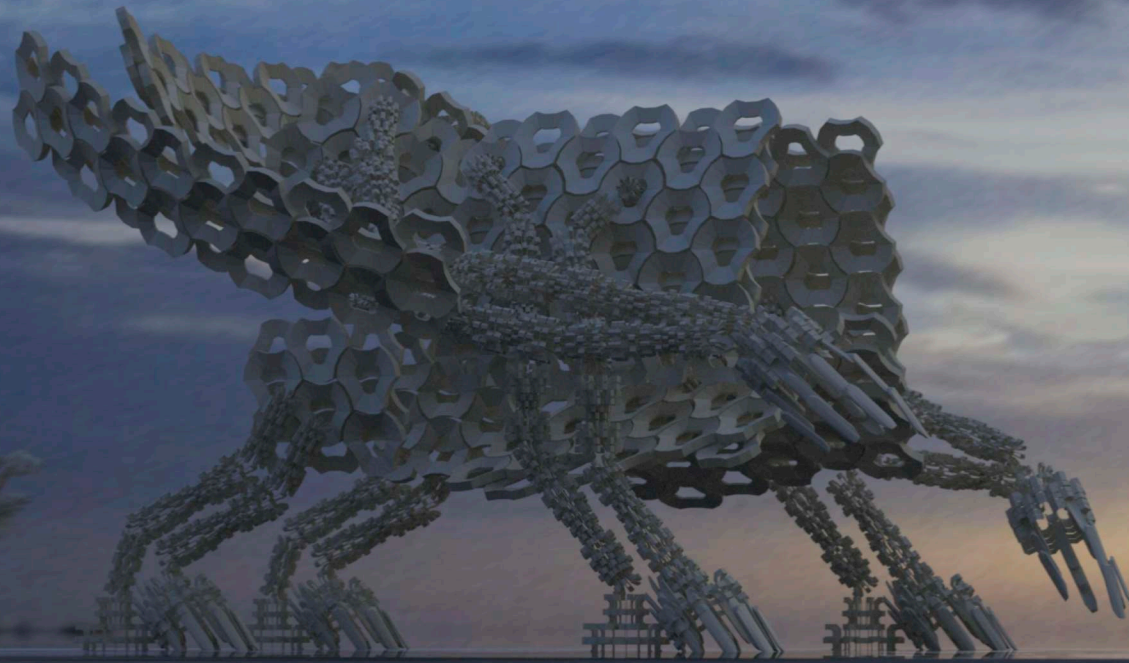
Flumes

Once the Choruses get their Plate armor, they begin to build Flumes.









Chorus (Oppenheimer Model)

Eventually the Choruses consist of pieces from all three Fronds: Flowers, Hands, and Plates.



Chorus (Oppenheimer Model)

At seven feet tall, it provides room for the kids to ride inside.

